



ZNF287 Polyclonal Antibody

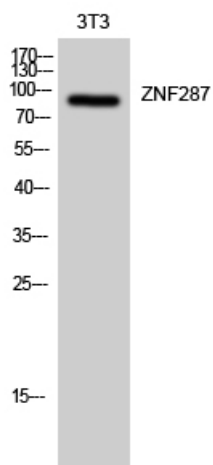
Catalog No	YP-Ab-02182
Isotype	IgG
Reactivity	Human;Rat;Mouse;
Applications	WB;IHC;IF;ELISA
Gene Name	ZNF287
Protein Name	Zinc finger protein 287
Immunogen	The antiserum was produced against synthesized peptide derived from human ZNF287. AA range:241-290
Specificity	ZNF287 Polyclonal Antibody detects endogenous levels of ZNF287 protein.
Formulation	Liquid in PBS containing 50% glycerol, 0.5% BSA and 0.02% sodium azide.
Source	Polyclonal, Rabbit,IgG
Purification	The antibody was affinity-purified from rabbit antiserum by affinity-chromatography using epitope-specific immunogen.
Dilution	WB: 1/500 - 1/2000. IHC: 1/100 - 1/300. ELISA: 1/5000.. IF 1:50-200
Concentration	1 mg/ml
Purity	≥90%
Storage Stability	-20°C/1 year
Synonyms	ZNF287; ZKSCAN13; Zinc finger protein 287; Zinc finger protein with KRAB and SCAN domains 13
Observed Band	90kD
Cell Pathway	Nucleus .
Tissue Specificity	Brain,
Function	function:May be involved in transcriptional regulation.,similarity:Belongs to the krueppel C2H2-type zinc-finger protein family.,similarity:Contains 1 KRAB domain.,similarity:Contains 1 SCAN box domain.,similarity:Contains 14 C2H2-type zinc fingers.,
Background	zinc finger protein 287(ZNF287) Homo sapiens This gene encodes a member of the krueppel family of zinc finger proteins, suggesting a role as a transcription factor. Its specific function has not been determined. This gene is located near the Smith-Magenis syndrome region on chromosome 17. [provided by RefSeq, Jul 2008],
matters needing attention	Avoid repeated freezing and thawing!



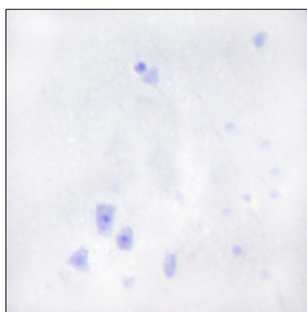
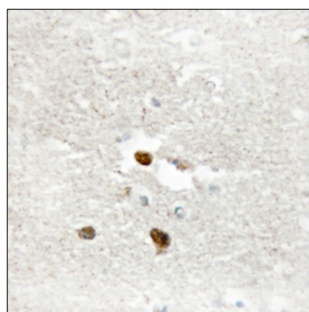
Usage suggestions

This product can be used in immunological reaction related experiments. For more information, please consult technical personnel.

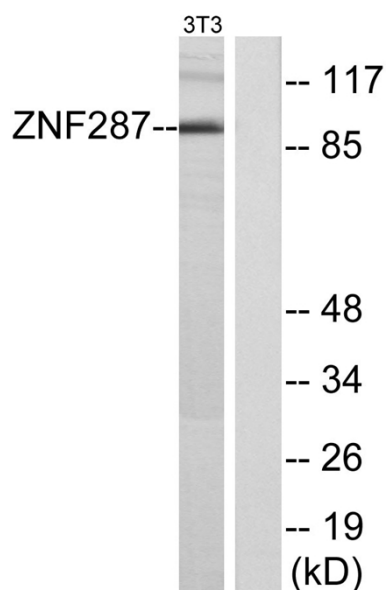
Products Images



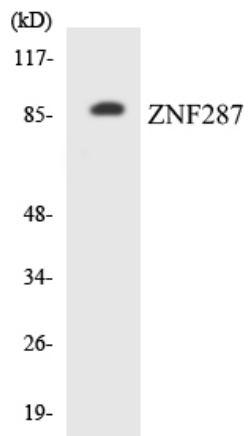
Western Blot analysis of 3T3 cells using ZNF287 Polyclonal Antibody. Secondary antibody(catalog#:RS0002) was diluted at 1:20000 cells nucleus extracted by Minute TM Cytoplasmic and Nuclear Fractionation kit (SC-003, Invent biotech, MN, USA).



Immunohistochemistry analysis of paraffin-embedded human brain tissue, using ZNF287 Antibody. The picture on the right is blocked with the synthesized peptide.



Western blot analysis of lysates from NIH/3T3 cells, using ZNF287 Antibody. The lane on the right is blocked with the synthesized peptide.



Western blot analysis of the lysates from Jurkat cells using ZNF287 antibody.